



QI HMGEP



VI X EMP

### PRODUCT INFORMATION

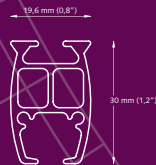
- Elegant and functional Medical Track System.
- Simple and quick installation.
- Bendable, both with an inside and outside bend with a 20 cm radius.
- Dustproof synthetic insert strip available;
- Bending Tool which can curve tracks easily.
- Colour: White.
- Lengths: 5.80 m (19') and 7 m (23')
- Rail quality: aluminium, chromated, powder coated.
- Factory applied patented dry lubricant.

### FOR USE IN

Healthcare sector and sanitary rooms, or at any other location where a high quality, elegant and manually operated Medical Track System is required.

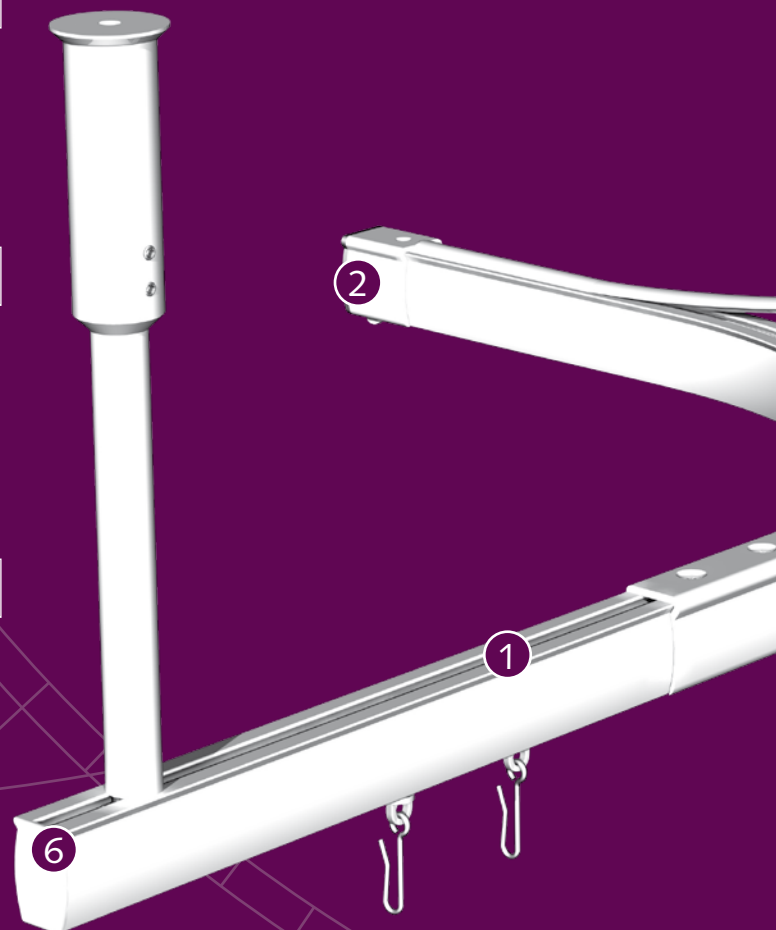
### PROFILE

- Shown actual size 1:1
- Aluminium Extrusion
- Weight: 500 grams per meter (5,36 ounce per ft.)



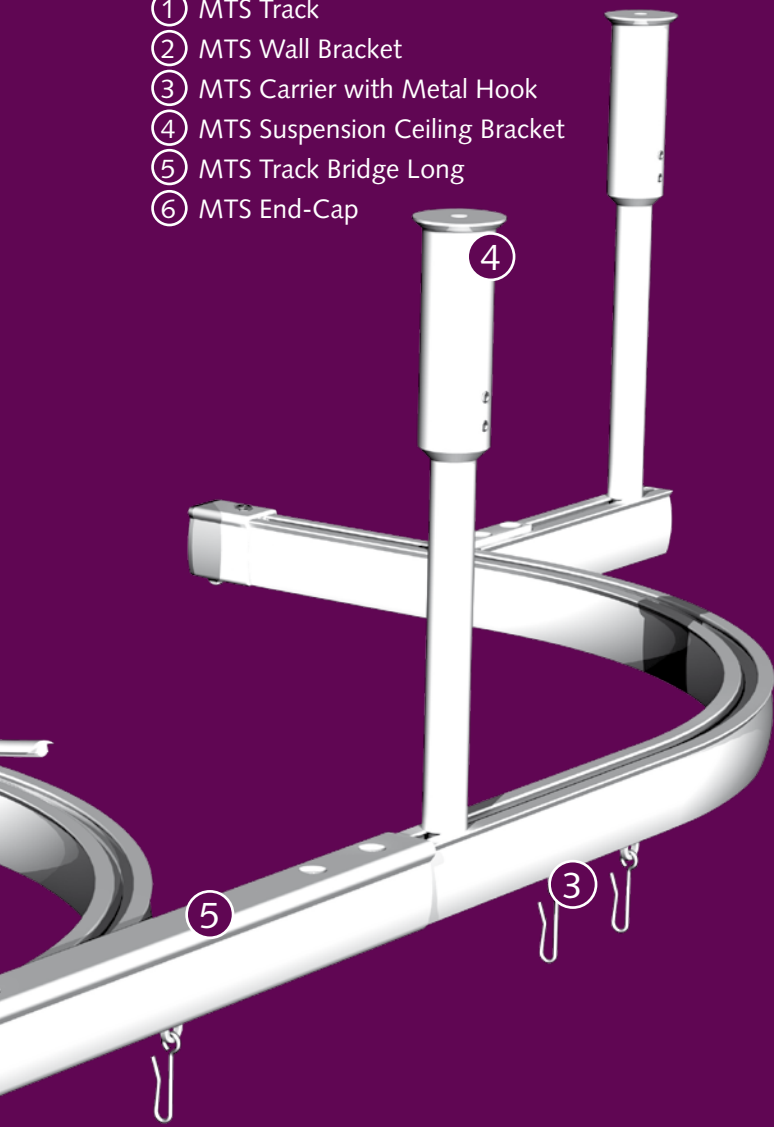
### BENDING

The track can be curved and reversed curved in a 20 cm (8") radius. Continuous curving is also available by special order from factory only.

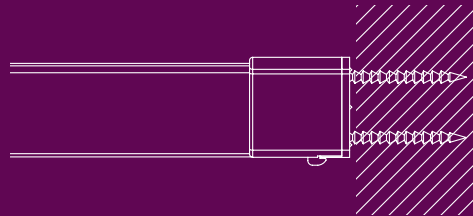


## Mounting

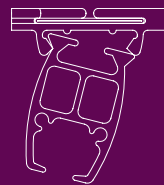
- ① MTS Track
- ② MTS Wall Bracket
- ③ MTS Carrier with Metal Hook
- ④ MTS Suspension Ceiling Bracket
- ⑤ MTS Track Bridge Long
- ⑥ MTS End-Cap



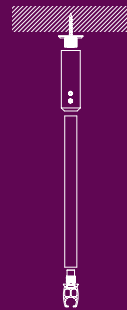
MTS Wall Bracket



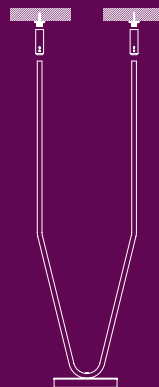
MTS Ceiling Bracket (for suspended ceiling)

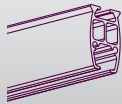


MTS Suspension Ceiling Bracket



MTS V-Shaped Suspension Bracket



**MTS TRACK**

Aluminium extrusion, powder coated, lubricated. Available lengths:  
5.80 m (19') (5 lengths/bundle) 4501001580  
7.00 m (23') (5 lengths/bundle) 4501001700

**MTS TOP PIECE SUSPENSION BRACKET**

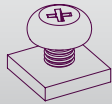
Required when using a shortened MTS suspension bracket. 4518101000  
10/each

**MTS CARRIER WITH METAL HOOK**

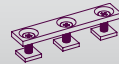
UV-resistant, short. 4510101000  
500/box

**V-SHAPED SUSPENSION BRACKET**

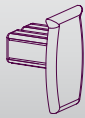
Length available on request. 4518801000  
1/each

**MTS END-STOP**

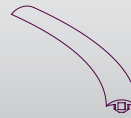
Metal, to secure MTS End-cap. 4516001000  
100/box

**MTS TRACK CONNECTOR**

To join two pieces of MTS Track. Length 65 mm (2,56") 4518401000  
100/box

**MTS END-CAP**

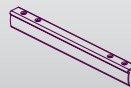
End-cap for open track ends. 4516101000  
20/box

**MTS FLEXIBLE DUST STRIP**

To cover the topside of the MTS Track. 4518501000  
100 mtr/roll

**MTS END-CAP T-CONNECTOR**

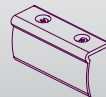
Used as End-cap in T-connection. 4516201000  
20/box

**MTS TRACK BRIDGE**

Length 28 cm (11"). 4518601000  
10/box

**MTS CEILING BRACKET (PLASTIC)**

For installation onto a suspended ceiling. 4518001000  
100/box

**MTS TRACK BRIDGE**

Length 6,5 cm (2,6"). 4518701000  
10/box

**FALSE CEILING BRACKET (METAL)**

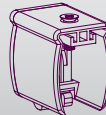
For installation on to a suspended ceiling. The track can be fixed in any angle. 4519001000  
100/box

**MTS TIEBACK**

To stack back the curtain. 4530501000  
10/box

**MTS SUSPENSION CEILING BRACKET**

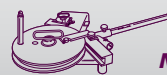
Length:  
10 cm (4") - 100 cm (3,3') 4518201000  
100 cm (3,3') - 1,5 m (4,9') 4518201500  
1/each  
Complete with MTS Insert Screw and MTS Top Piece

**MTS WALL BRACKET**

To install the rod inside a frame. 4520001000  
20/box

**MTS SUSPENSION ROD**

Can be used in connection with the MTS Top Piece and MTS Insert Screw. 4818305000  
10/bundle  
Length: 5 mtr

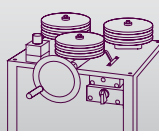
**CONTRACT BENDING TOOL**

**Contract Bending Tool** 2550000000  
1/each

**MTS Bending Wheel** 4560000000  
Ø 40 cm (15,7"), incl. strips 1/each

**MTS INSERT SCREW**

Needed to shorten the MTS Suspension Ceiling Bracket. 4518301000  
100/box

**ELECTRIC POWERED BENDER**

**Electrical Bending Tool** 1060500000  
1/each

**MTS Bending Wheel** 4560700000  
incl. strips 1/each